

# Why do we trim trees?

## RIGHT • OF • WAY & PLANTING GUIDE

*We all enjoy trees, but power quality and safety are threatened when trees contact power lines.*

### **Polk-Burnett Electric Cooperative removes trees and brush in the power line right-of-way to reduce outages and improve safety**

Polk-Burnett operates and maintains more than 3,500 miles of overhead and underground power lines. It is important to maintain the right-of-way for safety, reliability, accessibility, fire prevention and fewer outages and blinks.

#### **Tree and vegetation contact with power lines:**

1. Causes power outages and blinks.
2. Blocks ability to see and find problems on the power line.
3. Limits access for maintenance and repairs.
4. Makes outage restoration more difficult, longer and more expensive.
5. Is a fire and safety hazard.

#### **Tree clearing**

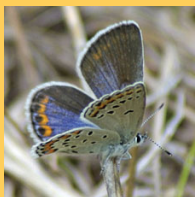
The right-of-way is cleared by cutting, trimming, mowing and applying herbicides. All work is performed by professional utility arborists and licensed applicators according to industry standards.

***We are respectful when working on your property and appreciate your cooperation.***

#### **Danger trees**

The electric system is regularly inspected for dead, dying and leaning trees. When found, they are marked and trimmed or removed.

***Never touch, trim or climb a tree that touches power lines! Report tree hazards, 800-421-0283.***



#### **Karner Blue butterfly**

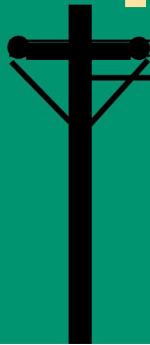
Polk-Burnett Electric Cooperative works with the DNR and U.S. Fish and Wildlife Service to help preserve the Karner Blue butterfly. The endangered butterfly is often found near purple lupine plants in sandy soil. We mark habitat sites under power lines and ask co-op members and employees to tread carefully in these areas each spring and summer. Thank you!

## Planting a tree or shrub?

Make sure full-grown branches won't grow into the right-of-way and touch power lines. Branches must be at least 15 feet away from power lines in yard areas and at least 20 feet away from power lines in all other areas.

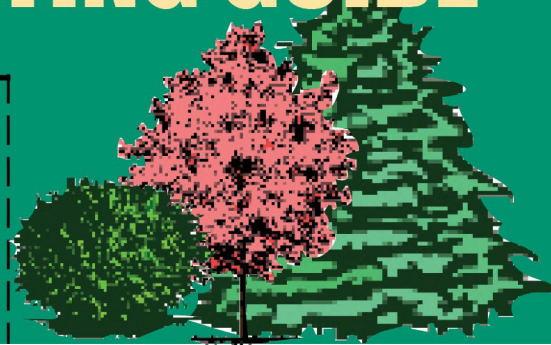
All vegetation must be planted away from power lines, so that mature branches cannot grow into the right-of-way. Vegetation that is planted or grows into the right-of-way needs to be cut or trimmed. Vegetation within 20 feet on either side of the power line is at risk for removal due to power line maintenance, repair and replacement. For safe, reliable electric service, follow these guidelines:

# YARD PLANTING GUIDE



All vegetation: trees & shrubs

**15-FT MINIMUM**



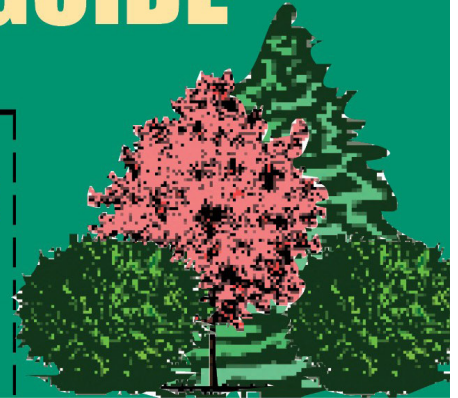
# RURAL PLANTING GUIDE



All vegetation  
**20-FT MINIMUM**

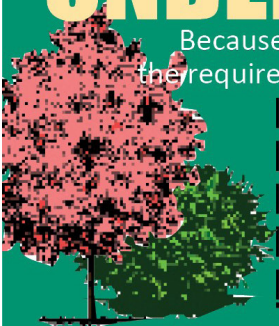


All vegetation  
**20-FT MINIMUM**



# UNDERGROUND PLANTING GUIDE

Because roots interfere with cables and wires, and vegetation impedes access, the required minimum planting distance from all underground power lines is 12 feet.



All vegetation  
**12-FT MINIMUM**

○—Underground cable



Call  
before  
you dig:



**800-242-8511 or 811**

Also, keep areas around electric meters and green transformer boxes clear of vegetation and obstructions that could limit access for repairs.

**DIGGERS HOTLINE**

800-421-0283



polkburnett.com

A Touchstone Energy Cooperative